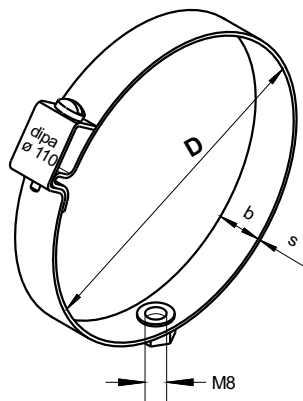


SCREW ON PIPE CLAMP

Type 109

one piece, with link-in screw top



All dimensions in mm

Description

The zinc-coated screw on pipe clamp Type 109 is a one piece clamp, equipped with a great load-bearing capability, power-looking riveted M8 connection nut armed fastening, for the assembling of plastic- or folded-seam pipes from 50 to 315 mm in every fitting position. The easy to install pipe clamp disposes of a closed chanked **link-in screw top** and is suitable for flexible pipes with large diameter. The pre-assembled screw is easily screwed in with battery-operated screwdrivers. There are no unfortified parts, the pipe clamp is delivered ready to mount. No part must be disassembled. **Link-in, screw tightly, ready !**

Combination possible with Type

102 a M8, 104, 307 HZ

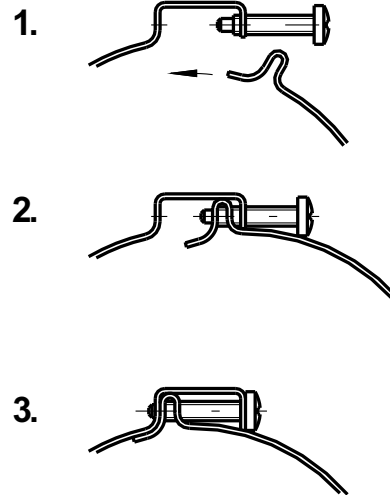
Specification

Zinc-coated

Preferable fields of application

Climate-, air- and sanitary technology

Assembly sequence



øD	b x s	Item number
50.0	20x1,0	22001670
63.0	20x1,0	22001671
63.0 Wi*	20x1,0	22025377
71.0 Wi	20x1,0	22025375
75.0	20x1,0	22001672
80.0 Wi	20x1,0	22001673
90.0	20x1,0	22001674
90.0 Wi	20x1,0	22025378
100.0 Wi	20x1,5	22001675
112.0 Wi	20x1,5	22001677
consecutive diameter until		
315.0 Wi	20x1,5	22001691
*) Wi = for folded spiral-seam pipes Other diameters on request. Please tell us the requested pipe diameter.		