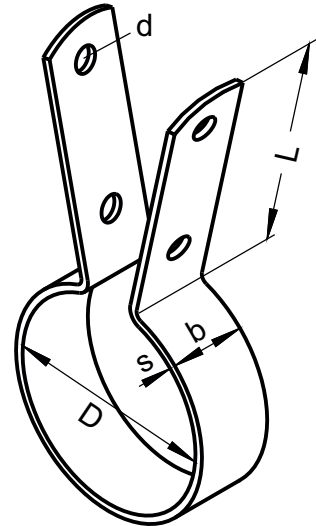


PIPE CLAMP

Type 113

one piece, with long limbs



All dimensions in mm

Description

Clean shaped, one piece pipe clamp made from zinc-coated band steel with long limbs and with high mechanical load capacity. The inside limb holes are to strain the pipe clamp, the outer for reception of contract flap e.g. Type 1210. Due to a jointly lock nut the contract flap can be attached articulated. The pendulum movement thus takes place outside the isolation. For usage with copper pipes the pipe clamp receives a glass fibre inlay. The glass fibre is resistant to constant temperatures up to 500°C.

Deliverable in diameter range from 15 mm until 168,3 mm.

Specification

Zinc-coated, on request also deliverable with glass fibre or elastomer inlay.

Combination possibilities with Type

102, 102b, 103A, 104, 114, 1030, 1210

Preferable fields of application

Air-, climate-, sanitary- and heating technology

**Also STAINLESS available
RUST
PROOF**

Material b x s	øD	L	d
20x1,0	15.0 17.2 18.0 consecutive pipe diameter until 38.0	60	6,5
20x1,5	42.4 44.5 48.3 consecutive pipe diameter until 76.1	60	6,5
20x2,0	80.0 88.9 104.0 consecutive pipe diameter until 168.3	60	6,5
30x2,5	60.3 64.0 70.0 consecutive pipe diameter until 168.3	80	11,0
Other diameters on request. Please tell us the requested pipe diameter.			