

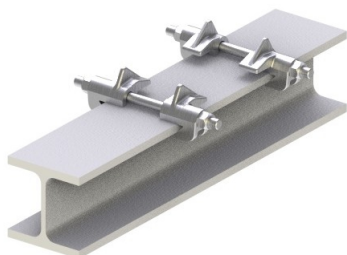
MOUNTING CLIP SET

made of cast iron

Type **22 H1**
22 H4

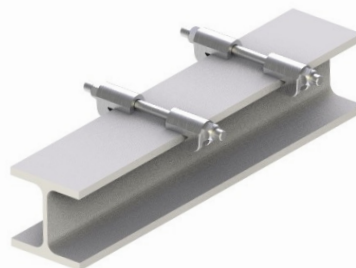
Mounting clip set Type 22 H1

- lateral guidance
- lift-off prevention (h = 15 mm)
- for beam widths 80 until 300



Mounting clip set Type 22 H4

- lateral guidance
- for beam widths 80 until 300



Type	for beam widths	clamping thickness	lateral guidance	lift-off prevention	Mounting clip set incl. :		Weight kg	
					washer+ threaded rod galvanized	washer+ threaded rod hot-dip galvanized		
Type 22 H1	22 H1/80-120	80 - 120	6 - 15	X	X	52024098	52026180	1,45
	22 H1/140-160	140 - 160		X	X	52024099	52026181	1,5
	22 H1/180-220	180 - 220		X	X	52024100	52026182	1,6
	22 H1/240-260	240 - 260		X	X	52024101	52026183	1,7
	22 H1/280-300	280 - 300		X	X	52024102	52026184	1,75
Type 22 H4	22 H4/80-120	80 - 120	6 - 15	X	-	52024103	52026185	1,1
	22 H4/140-160	140 - 160		X	-	52024104	52026186	1,2
	22 H4/180-220	180 - 220		X	-	52024105	52026187	1,25
	22 H4/240-260	240 - 260		X	-	52024106	52026188	1,3
	22 H4/280-300	280 - 300		X	-	52024107	52026189	1,4

Description

The mounting clip set includes 2 x 2 mounting clips connected with threaded rods M12 - 8.8 and associated washern. The Type 22 H4 to be used for lateral guidance. The Type 22 H1 to be used for lateral guidance and additional lift-off prevention. Deliverable are the mounting clip sets for beam widths from 80 until 300.

Specification

Clips hot-dip galvanized.
Washers and threaded rods galvanized or hot-dip galvanized.



Ordering designations: Type...
e.g. 22 H1/80-120

Beam...
for HEA 100

Surface...
Washers+threaded rods gavanized

Item number...
52024098